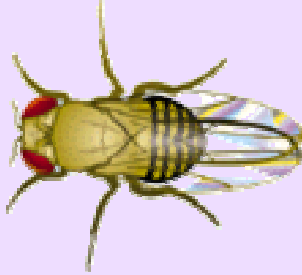


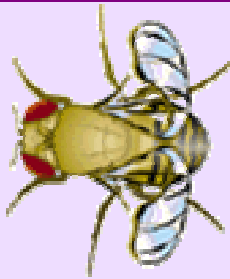
MUTANTS OF DROSOPHILA MELANOGASTER

ALTERED WING STRUCTURES



Drosophila "wild"

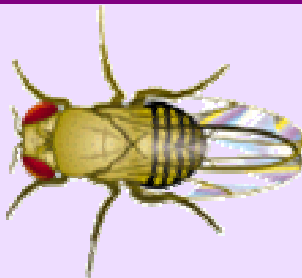
This is a normal drosophila melanogaster, or "wild types"



Drosophila "curly"

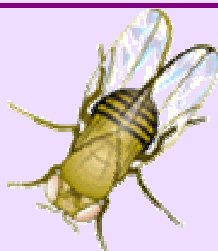
This is a "curled wings" drosophila melanogaster. They have a defect in their "curly gene," which is on the second chromosome. Curled wings is a dominant mutation.

ODD COLORED EYES



Drosophila "wild"

This is a normal drosophila melanogaster, or "wild types.". The eye color is bright red.



Drosophila "white"

This is a "white eyes" drosophila melanogaster. In these flies, the white gene not produces red pigment.